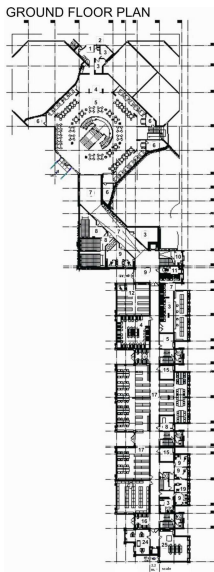


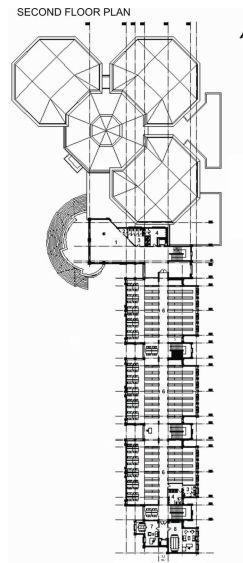
62. 2001
63. 3,5 years
64. 6 months (2005)
65. October 2005

E Costs

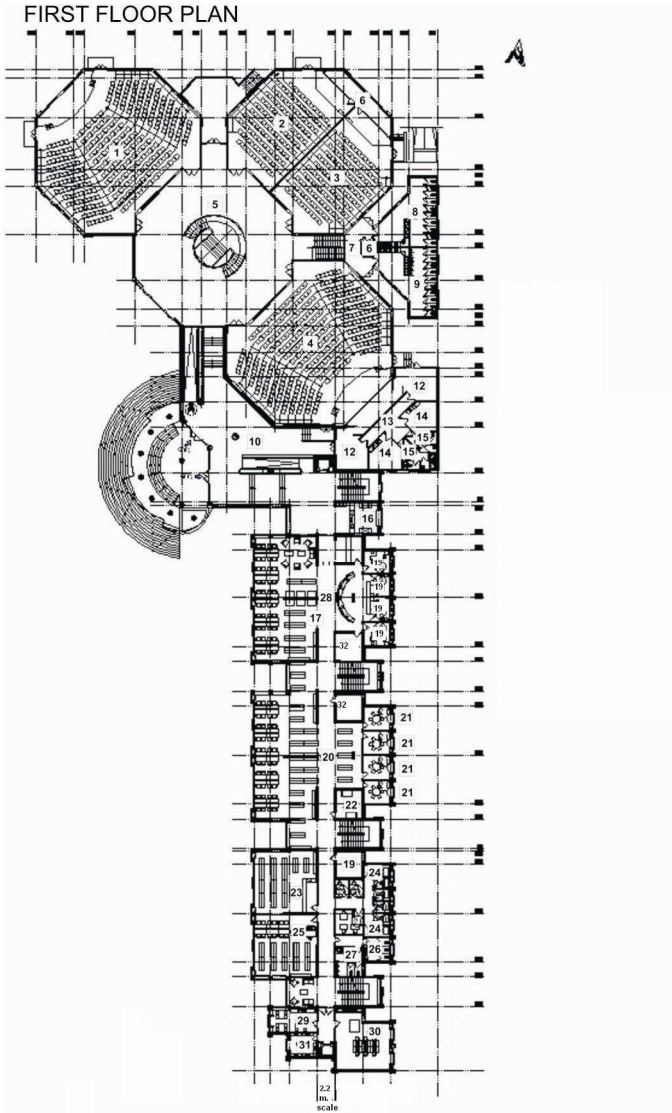
66. £ 800 000 (GBP) (\$1 600 000 USD)
67. £ 4 600 000 (GBP) (\$9 200 000 USD)
68. £ 1 800 000 GBP (\$3 600 000 USD)
69. £ 70 000 GBP (\$140 000 USD)
70. £ 7 270 000 GBP (\$14 540 000 USD)



Ground Floor



Second Floor



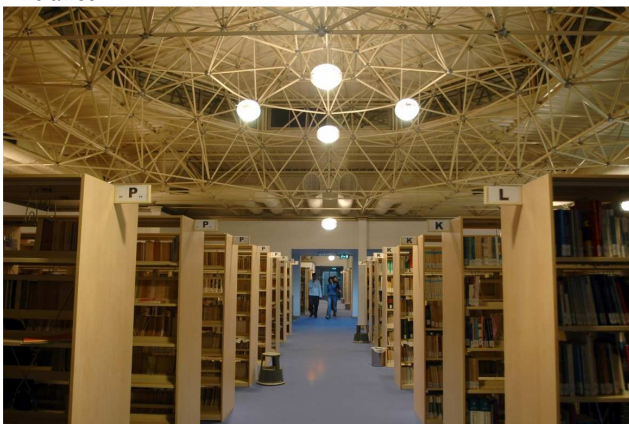
First floor (Architects)



Near East University Grand Library by night



Entrance



Reading area

Olsztyn, Main Library of the University of Warmia and Mazury. Poland

A General information

a) Name and address

1. University library
2. The Main Library of the University of Warmia and Mazury in Olsztyn
3. 12b Oczapowskiego st. 10-719 Olsztyn, Poland
4. Phone : +48 89 523 33 09
Fax : +48 89 524 00 05
E-mail : bibuwmm@uwm.edu.pl
5. Mrs. Danuta Konieczna
6. Mrs. Danuta Konieczna

b) Population served

7. 41 147
8. 25 379
9. 13 615
10. 3 007

c) Conditions of the library (before the new project)

11. 7 666 m²
12. 481
13. 889 228 volumes
14. 17 500 volumes (estimate)
15. 850 000 volumes (estimate)
16. 126
17. 47 hours/week and 280 days/year

B The new building: aims and features

a) Architect(s)

18. The Architect Team of the Faculty of Technical Sciences of the University of Warmia and Mazury in Olsztyn
19. Walerian Wierzchowski, Magdalena Rafalska
20. New building

b) Aims of the new building

21. The main aim of the new building was to create a comfortable, friendly and interesting space for students and staff. The following solutions were planned:
 - more holdings in open stacks
 - more reader seats and computer workstations
 - open access to the audiovisual materials and introduce audiovisual facilities
 - create seminar rooms, individual and group study rooms
 - development of the library services by connecting 8 faculty libraries (situated earlier on the campus) with the Main Library
 - extension of the opening hours
 - more comfortable working conditions for staff.

c) Special Features

22. The library is located in the centre of the university campus (in Kortowo – the district of Olsztyn). Adjacent to public transportation – about 15 minutes from the centre by bus.
23. The plan of the building is irregular. It consists of 3 segments. Each of them has different levels; there are three glass domes on the roof of each of the segment (pyramide-shape dome, cone-shaped dome and small cupola). The structure of the building – board-column system with reinforced concrete wall and YTONG technology. Columns of the modular grid a 6 x 6. Disabled access. A car parking space under one of the segment (2 473 m²).

C Technical information about the new building

a) Floor area (in m²)

24. 19 423 m²
25. 5 382 m²: open acces collections – 4 287 m²
 - current periodical reading room – 302 m²
 - circulation desks – 168 m²
 - information with general reading room – 465 m²
 - patent and standard collecion – 160 m²
26. 5 booths with audiovisual facilities (30 m²)

27. 240 PCs for users (including special computer room – 60 PCs workstations, 189 m²)
28. 928 m² : old books, maps, microfilms, AV– 537 m²
 - patents and standards – 160 m²
 - Special collection for EU documents – 231 m²
29. 520 m² : 3 seminar rooms for 102 seats, with audio equipment and multimedia projectors
 - 1 training room with PCs workstations for 20 users
 - 2 group study rooms (67 m²)
 - 8 carrels (51 m²)
30. 407 m²
31. 527 m² (300-350 seats, audio and video equipment, beamers)
32. Cafeteria, café – 190 m²
33. Administration segment – 2 391 m²
34. 1 738 m²
35. 5 400 m² (estimate)
36. 3 segments:
 1. segment for users – 5 levels
 2. segment for users (didactic) – 3 levels
 3. segment for staff and administration – 4 levels
37. 874 seats + 350 seats in the lecture hall
38. 5 audiovisual booths
39. 240 PCs
40. 4 seminar rooms
41. 488 seats

b) Total potential capacity of shelving

42. 1 500 000 vol.
43. 6 000 linear metres
44. 20 000 linear metres
45. 18 000 linear metres
46. separate room
47. 400 linear metres - patent and standard collection
48. 135 (estimate)

c) Mechanical features

49. Natural ventilation and air conditioning

50. Heating included in the air conditioning; central heating system in some parts of the building
51. Natural light comes through the domes in the roof and windows. Desk lamps on user seats.
52. Acoustic absorbent plaster on the walls in one seminar room (52 seats) and in the lecture hall.
53. 4 staircases (one for staff only), 2 public lifts, 1 lift for staff only.
54. 2 lifts for books; 170 book trucks
55. 3M detection system; 3 security gates
56. Intelligent building management system (BMS). 67 camera monitoring by security staff
57. Capacity for IT and power connections to all desks. CAT 5 cabling, running at 100 MB/S
58. -

D Schedule of the building process

59. December 1999
60. -
61. 2000 - 2001
62. November 2001
63. 2001 - 2007
64. Furnishing – 8 months ; Moving the collections – 4 months
65. 15 October 2007

E Costs

66. -
67. 13 090 000 € (estimate)
68. 3 580 000 € (estimate)
69. -
70. 16 670 000 € (estimate)



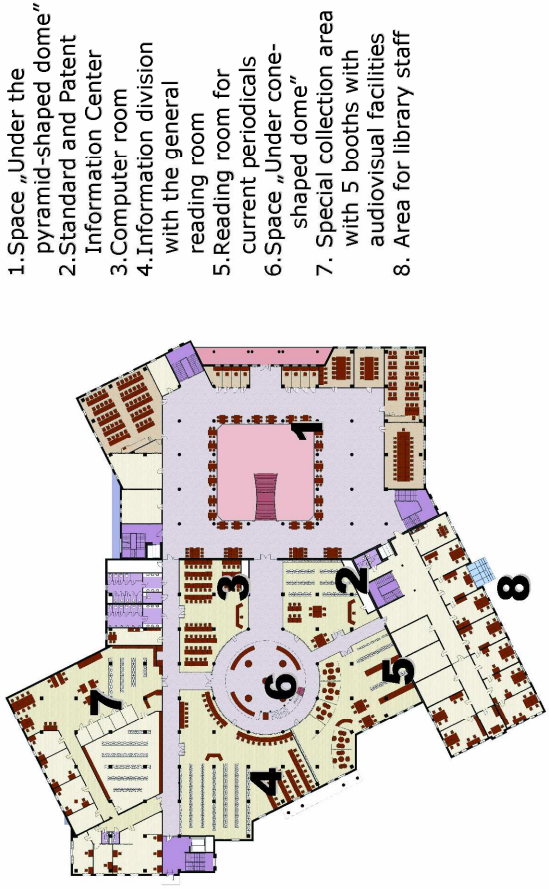
Facade (Janusz Pająk)



Reading room(J.Pająk)



Computer zone(J.Pająk)



- 1.Space „Under the pyramid-shaped dome”
- 2.Standard and Patent Information Center
- 3.Computer room
- 4.Information division with the general reading room
- 5.Reading room for current periodicals
- 6.Space „Under cone-shaped dome”
7. Special collection area with 5 booths with audiovisual facilities
8. Area for library staff

Library of the University of Warmia and Mazury in Olsztyn
LEVEL III –First Floor

Pardubice, University Library. Czech Republic

A General information

a) Name and address

1. University Library
2. University Library of the University of Pardubice
3. Studentská 519, 53210 Pardubice, Czech Republic
4. Phone : +420 466 036 546
Fax : + 420 466 036 538
E-mail : knihovna@upce.cz
5. Iva Prochásková
6. Iva Prochásková (iva.prochaskova@upce.cz)

b) Population served

7. 7 315
8. 6 688
9. 2 016
10. 474

c) Conditions of the library (before the new project)

Library was situated in the old building at the Faculty of chemical technology. There was impossible to arrange large open access storage. Reading hall with an inadequate number of reader seats.

11. 970 m²
12. 70
13. 135 000 volumes
14. 5 000 volumes
15. 90 000 volumes
16. 11
17. 48 hours p week

B The new building: aims and features

a) Architect(s)

18. Východočeská stavební, s. r. o. Solnice, Czech Republic
19. Ing. arch. Jan Třeštík, Pardubice, Czech Republic
20. New building

b) Aims of the new building

21. The primary aim of the project was to arrange an adequate study space for about 3 000 students (in 1995) at the new regional university created in 1994. Above all it meant to arrange large open access storage, a sufficient number of reader seats and, to install modern information technology. Besides, the project involved to build up seminar rooms and computer rooms for information literacy training and intended to improve working condition for staff.

c) Special Features

22. The library is located in the university campus, adjacent to public transportation
23. The building is rectangular, peripheral walls are partly bricked up and faced and partly made up of glass panels. The structure is supported by pre-cast concrete columns. The ground floor is open with the first floor.

C Technical information about the new building**a) Floor area (in m²)**

24. 2 808 m², divided into three floors
25. 494 m²
26. 5 m²
27. 5 m²
28. N/A
29. 30 m²
30. 0 m²
31. – 32. N/A
33. 258 m²
34. 756 m²
35. 100 m²
36. Three floors (two public floors)
37. 246
38. 2
39. 40 and wi-fi in the public access area
40. 1
41. 20

b) Total potential capacity of shelving

- 42. 250 000 volumes
- 43. 100 000 volumes
- 44. 150 000 volumes
- 45. – 47. N/A
- 48. 20

c) Mechanical features

- 49. yes/no
- 50. district heating
- 51. daylight, central artificial lighting
- 52. open space a bit noisy
- 53. yes / 54. no
- 55. – 56. yes
- 57. CAT 6, 1Gb/s

D Schedule of the building process

- 59. 1994
- 60. 1994
- 61. 1995
- 62. April 1, 1996
- 63. 18 months
- 64. September - November 1997
- 65. November 25, 1997

E Costs

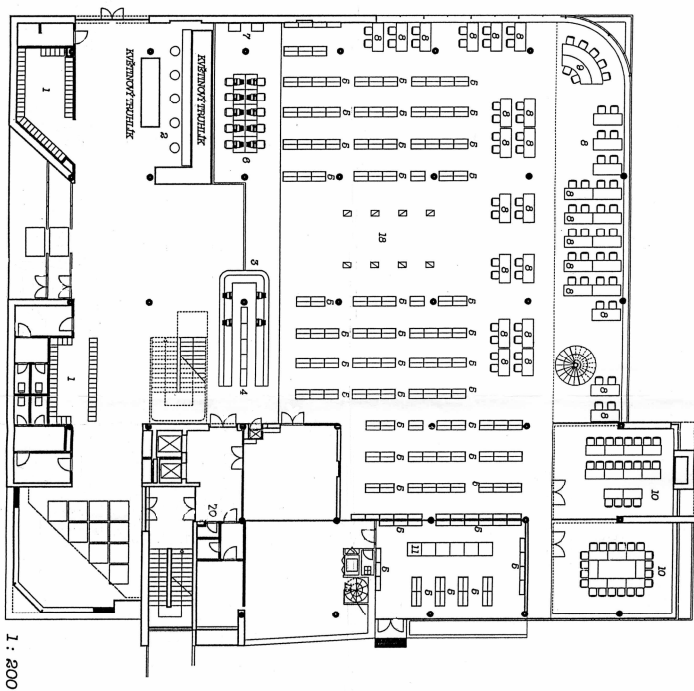
- 66. 0 (property of the University of Pardubice)
- 67. 1 700 000 €
- 68. 200 000 €
- 69. 300 000 €
- 70. 1 930 000 €

F Publication

Prochásková ROCHÁSKOVÁ, Iva. Nová budova Univerzitní knihovny Univerzity Pardubice. In *Knihovna a architektura 2003 : knihovny bez bariér*. Praha : Státní technická knihovna, 2003. Pages 65-69.



Reading room



1 : 200

I. NP



3D ATELIER
ARCHITECTURE
CONSTRUCTION
INTERIORS
LANDSCAPE
DESIGN
PARDUBICE
TEL: +420 466 031 111
WWW.3DATELIER.CZ

UNIVERZITNÍ KNIHOVNA PARDUBICE

Ground Floor

Paris, Bibliothèque Sainte-Barbe. France

A Information générale

a) Nom et adresse

1. Bibliothèque universitaire
2. Bibliothèque Sainte-Barbe
3. 4 rue Valette, 75005 Paris, France
4. Tel : +33.1.53.46.15.77
Fax : +33.1.53.46.15.90
E-mail : isabelle.boudet@univ-paris3.fr
5. Mme Isabelle Boudet
6. Mme Isabelle Boudet (directrice), Mme Sophie Mazens (directrice-adjointe), M. François Michaud (directeur-adjoint)

b) Population desservie

7. – 9. Environ 57 000 étudiants des cycles L et de M1 des Universités Paris 1, Paris 2, Paris 3 et Paris-Sorbonne
10. Environ 3 000 enseignants et enseignants-chercheurs

c) Situation de la bibliothèque (avant le nouveau projet)

11. – 17. n.a.

B Le nouveau bâtiment: buts et caractéristiques

a) Architecte(s):

18. Agence Antoine Stinco
19. Chef de projet: M. Claude Reinert
20. Aménagement

b) Buts du nouveau bâtiment

21. Courte description des principaux objectifs du projet:
La bibliothèque Sainte-Barbe apportera aux étudiants du Quartier latin 1 000 nouvelles places de travail et des collections entièrement en libre accès dans le domaine des lettres et des arts, de la philosophie, des sciences humaines et sociales, du droit et des sciences politiques, des sciences économiques et de gestion.

D'importantes ressources informatiques faciliteront l'accès et l'usage de la documentation électronique.

c) Caractéristiques

22. Dans le quartier de Paris où se situe le cœur de l'activité universitaire, sur la Montagne Sainte-Geneviève.
23. L'ancien collège Sainte-Barbe fait l'objet d'une réhabilitation complète. Les deux bâtiments principaux actuels ont été construits par l'architecte Lheureux en 1881. Un bâtiment de liaison, construit par Lionel et Brandon, date de 1936. De nombreux éléments du site sont inscrits au Supplément à l'Inventaire des monuments historiques : façades, toiture, escaliers, plusieurs salles (réfectoire, préau, salle de dessin, amphithéâtre) et certains mobiliers (tables du réfectoire, pupitres de l'amphithéâtre). Le respect de ces éléments a été l'un des enjeux majeurs de la transformation des espaces en salles de lecture. Une autre contrainte forte a été la nécessité de renforcer la capacité de charge de bâtiments qui avaient à l'origine l'enseignement pour destination. Sur le quatrième côté du site, un gymnase et deux pavillons datant des années 1970 ont été détruits et remplacés par une rangée d'arbres aux longues tiges et une treille de plantes grimpantes. La cour centrale est profondément remaniée : un étage de magasins est créé en-dessous, destiné aux bibliothèques mitoyennes Sainte Geneviève et Cujas ; un talus en pente est aménagé le long des deux ailes de Lheureux, au surplomb des cours anglaises qui sont élargies pour mieux éclairer les espaces de lecture du rez-de-chaussée bas. La cour est plantée d'herbe pour une large part et ornée d'arbustes en pots sur un revêtement de bois.

C Informations techniques sur le nouveau bâtiment

a) La surface (en m²)

24. 9 200 m²
25. 6 300 m²
26. – 30. n.a.
31. 150 m²
32. n.a.
33. 1 300 m²
34. 750 m²
35. 800 m²
36. 6 niveaux, dont 5 niveaux publics

37. 1 000
38. n.a.
39. 192 places équipées d'ordinateurs et 30 bornes de consultation debout
40. n.a.
41. 1 000, dont 732 équipées d'une prise électrique et 50 places de travail en groupe

b) Capacité potentielle totale de stockage

42. 12 500 mètres linéaires
43. 6 500 mètres linéaires
44. 6 000 mètres linéaires
45. 6 000 mètres linéaires
46. – 47. n.a.
48. 60

c) Caractéristiques techniques

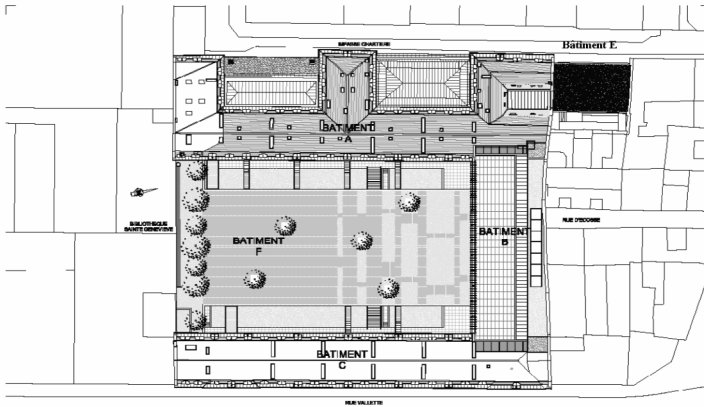
49. Système double flux, basse pression (5 centrales de traitement d'air) ; climatisation des magasins
50. Compagnie parisienne de chauffage urbain (CPCU) : 2 échangeurs vapeur.
51. Eclairage: dans les salles de lecture, luminaires de faux plafonds d'éclairage direct à lampes fluocompactes et appliques d'éclairage indirect + lampes individuelles sur les tables.
52. Traitement acoustique : faux-plafonds perforés pour la moitié des salles de lecture ; pour l'autre moitié, dalles de laine de roche avec des billes de verre.
53. 6 ascenseurs, 2 monte-charge et une plate-forme pour les personnes à mobilité réduite.
54. non
55. Portiques de détection antivol avec antennes RFID
56. n.a.
57. Pré-câblage de catégorie 6 : réseau RAP à 2 Mbits par seconde
58. Système de sécurité incendie de catégorie A; système anti-intrusion.

D Échéancier de réalisation

59. automne 2001
60. printemps 2002
61. septembre 2002 – avril 2005
62. octobre 2006
63. 24 mois
64. à partir de février 2008
65. septembre 2008

E Coûts

66. n.a.
67. 24 000 000 €
68. 3 000 000 €
69. 2 500 000 €
70. 29 500 000 €



Plan général du site

© Antoine Stinco

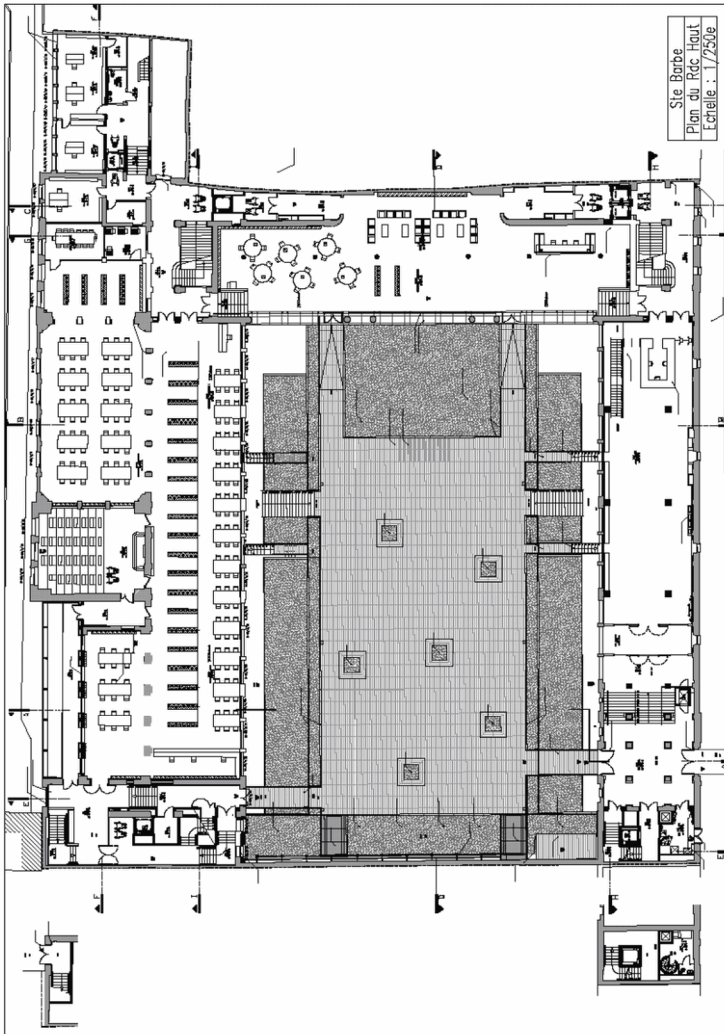
Site plan



Sainte-Barbe Esquisse Cour (Architecte)



Sainte-Barbe Salle Dessin



Plan du rez-de-chaussé

Poole, The Sir Michael Cobham Library - Bournemouth University. United Kingdom

A General information

a) Name and address

1. University Library
2. The Sir Michael Cobham Library, Bournemouth University
3. Talbot Campus, Fern Barrow, Poole, Dorset, BH12 5BB, UK
4. Phone : +44 (0)1202 965044
Fax : +44 (0)1202 965475
E-mail : dball@bournemouth.ac.uk
5. David Ball
6. David Ball

b) Population served

7. 19 227
8. 12 085
9. 5 115
10. 1 392

c) Conditions of the library (before the new project)

11. 4 032 m² in 2 libraries
12. 897
13. 202 745 total number of books, pamphlets, periodical volumes including special collections
14. 202 745
15. 0
16. 59,9
17. 71 hours per week for 335 days

B The new building: aims and features

a) Architect(s)

18. Saunders Architects
19. Bill Moisan
20. Extension / Renovation

b) Aims of the new building

21. To provide an iconic learning space epitomising the aspirations of the University's corporate vision: "youthful and innovative ... high quality ... student-centred learning"
 - to offer safe, equal and autonomous access for all, with sensitive support for those with special needs
 - to conform to the University's energy-saving environmental policy
 - to be flexible and responsive to the current and future demands of a growing and diversifying academic community with an intensifying focus on research
 - to offer a coherent integrated spectrum of services previously spread across the campus in two libraries and various offices
 - to meet tight constraints in terms of planning and covenants (e.g. not exceeding five storeys) and budget (£5.3m)
 - to increase readers' seats in configurations supporting different learning styles, with flexible computer access and wireless technology
 - to extend the opening hours through self service

c) Special Features

22. location of the library in a landmark position in the centre of the campus
23. octagonal plan
 - a new five-storey octagon linked along one face to an existing building; the latter comprises two inter-linking two-storey octagons, built in the 1980s and fully refurbished as part of the project
 - built around a central service core
 - free span construction with no obtrusive pillars allowing for most efficient use of floor area
 - angled windows to minimise solar gain
 - disabled access with a lift, designated for priority use by those with special needs
 - materials selected to reduce maintenance costs, etc.

- old refurbished building has a large area for social computing/study, space dedicated to postgraduate students and learning support, a law library, a language/computer laboratory
- entrance leading to strategically placed help points, designed to be welcoming and accessible, and on into the new build tower housing the main bookstock
- natural zoning of activities, with areas for quiet study, learning support, online research and use of special collections, postgraduate and group activities, and individual computing
- transactions on the ground and 1st floors with social learning space and increasingly silent study on the 2nd to 4th floors, where the seating layout is conducive to silent study
- full wireless network and “blue sockets”, for safe connection of non-wireless laptops to the University network, allow daily use of a large number of computers without restricting study space through fixed desk-top machines
- a special collections room profiles our broadcast media and conservation sciences resources
- signage using accessible font providing clear, minimal but effective guidance

C Technical information about the new building

a) Floor area (in m²)

24. 5 523 m²
25. 3 027,96 m²
26. 60,65 m²
27. N/A
28. 75,07 m²
29. 8 rooms totalling 214,2 m²
30. N/A
31. N/A
32. 33 m²
33. 1 041,44 m²
34. N/A
35. 1 070,68 m²
36. 5 floors new build, 2 floors refurbishment

37. 985
38. 29
39. 257
40. 129
41. 570

b) Total potential capacity of shelving

42. 193 895
43. 4 500 linear metres with 183 738 books and 1 115 periodical titles
44. – 45. N/A
46. 9 042
47. N/A
48. 54,34

c) Mechanical features

49. In the new build section, a displacement ventilation system with full air-conditioning confined to specific areas, night cooling of the structure, additional air handling as required and a targeted heat curtain across the automatic entrance doors.
50. 3 Hamworthy Purewell natural gas fired atmospheric cast iron boilers at 105 kW each. These have an optimiser and weather compensation control and all adjustments are made with the BMS. The building is heated on the ground and first floors via fan coil units and a fresh air heat recovery unit located in the plant room. 2nd, 3rd and 4th floors are heated via radiators located around the perimeter of the building and is naturally ventilated to maintain an average temperature of 22°C
51. In the new build section internal lighting is fluorescent and controlled by a programmable lighting control system (ECS system) with the exception of lighting to utility and plant rooms. External lighting is controlled by a combination of time lock and photocell.
52. In the new build section acoustics were designed to minimise noise from the different activities.
53. one lift
54. none
55. 3M detection system and tattle tape
56. Talis
57. Cat 5e (1000mbs) UTP Cabling system to 359 outlets. Capacity - there is a 1 GB/s link to the building, 100 MB/s to each desktop, and the wireless link is 11 MB/s.

58. none

D Schedule of the building process

59. 2000

60. N/A

61. Jan-March 2001

62. June 2001

63. 14 months for new build section plus an additional 4 months for the refurbishment.

64. August 2002(new build)

65. January 2003 (complete project)

E Costs

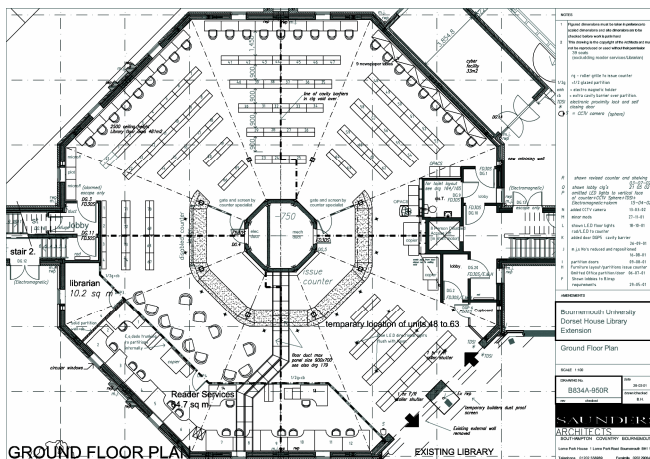
66. 0

67. £ 4 125 987 GBP

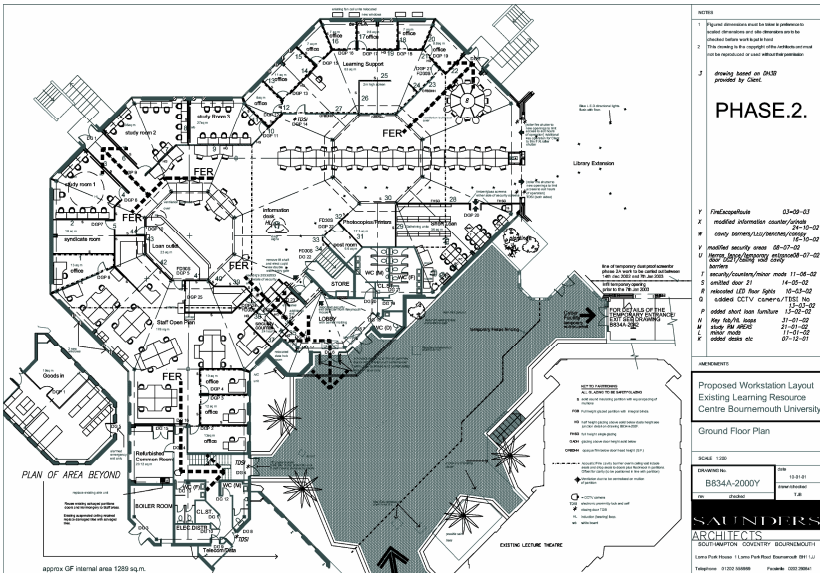
68. £ 645 239 GBP

69. £ 528 774 GBP

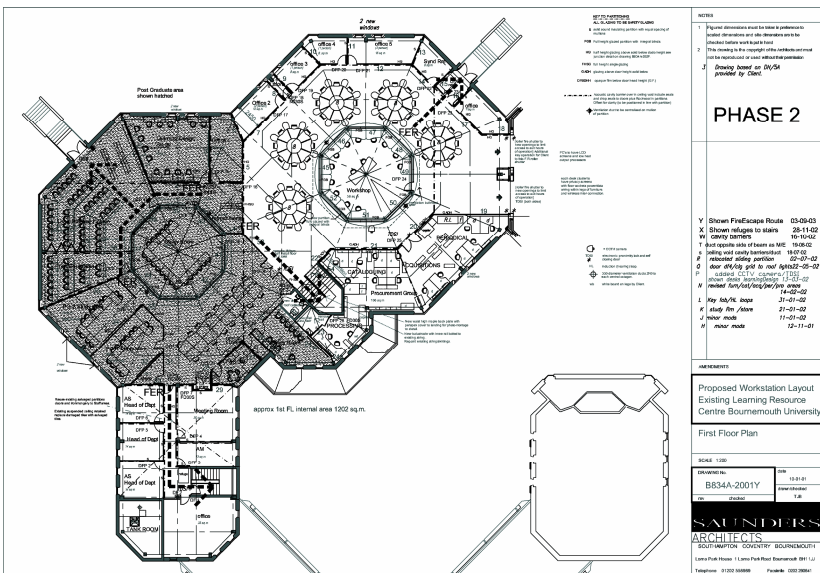
70. £ 5 300 000 GBP



Ground floor before extension and renovation (Architects)



Ground floor after extension and renovation (Architects)



First floor after extension and renovation

Reims, Bibliothèque Robert de Sorbon. France

A Information générale

a) Nom et adresse

1. Bibliothèque universitaire
2. Bibliothèque Robert de Sorbon
3. Service commun de la Documentation de l'Université de Reims
Champagne-Ardenne
Campus Croix-Rouge
Avenue François Mauriac
51095 Reims, France
4. Tel : (+33) 3.26.91.34.97
Fax : (+33) 3.26.91.39.30
E-mail : carine.elbekri@univ-reims.fr
5. Mme Carine Elbekri-Dinoird
6. Mme Carine Elbekri-Dinoird

b) Population desservie

- 8 000 étudiants ; 1 000 enseignants, chercheurs et personnels IATOSS et 500 lecteurs autorisés
7. 8 351 (chiffres 2006)
 8. 8 600
 9. -
 10. 600 environ

c) Situation de la bibliothèque (avant le nouveau projet)

11. 6 500 m²
12. 450
13. 8 500 mètres linéaires
14. 2 800 mètres linéaires
15. 5 700 mètres linéaires
16. 42
17. 60 heures

B Le nouveau bâtiment: buts et caractéristiques

a) Architecte(s)

18. Atelier d'architectes CHABANNE (Lyon) et BLP (Reims)

19. Frédéric Blerot, puis Francis Lecompte
20. Construction

b) Buts du nouveau bâtiment

21. Reconstruction d'un bâtiment hors d'usage, mettre le bâtiment au coeur du campus, adapté aux nouvelles technologies de l'information et augmenter sensiblement les surfaces pour les collections et le public. Bâtiment HQE (Haute Qualité Environnementale)

c) Caractéristiques HQE

(Haute Qualité Environnementale)

22. Au cœur du campus universitaire, localisation de la bibliothèque sur le campus, proche des transports publics
23. panneaux préfabriqués en béton
 - façades très vitrées
 - accès pour handicapés

C Informations techniques sur le nouveau bâtiment

a) Indiquer la surface (en m²)

24. 9 876 m²
25. 5 845 m²
26. espaces de consultation répartis dans les alvéoles du bâtiment, 10 places (4 vidéos et 6 audios)
27. 183 postes publics (dont 90 clients légers)
28. -
29. 1 salle de formation (35 places) et 6 salles de travail en groupe, 2 salles de travaux pratiques, 1 salle pour les enseignants
30. Espace d'exposition (70 m²) donnant sur le hall d'accueil
31. Non
32. Non
33. 467 m²
34. 1 763 m²
35. 1 801 m²
36. 4 niveaux, dont 2 niveaux de services publics, 3 niveaux de services internes et 2 niveaux de magasins
37. 1 000
38. 13
39. 183 + bornes wifi (WLAN)

40. 1 salle de réunion (65 places), 6 salles de travail en groupe (31 places) et 1 salle pour les déficients visuels

41. -

b) Capacité potentielle totale de stockage

42. 170 000 volumes + 1 000 titres de périodiques

43. 170 000 volumes + 1 000 titres de périodiques

44. 9 000 mètres linéaires

45. 0

46. 3 000 documents

47. cartes, microformes

48. 48,7

c) Caractéristiques techniques

49. Cible prioritaire du projet Haute Qualité Environnementale (Label HQE), pas de climatisation sauf pour les espaces techniques, les serveurs informatique et la reprographie

50. Cible prioritaire du projet Haute Qualité Environnementale (Label HQE), chauffage urbain

51. Grandes verrières, éclairage électrique avec variateur d'intensité. Cible prioritaire du projet Haute Qualité Environnementale (Label HQE)

52. Cible prioritaire du projet Haute Qualité Environnementale (Label HQE)

53. 2 ascenseurs 1 000 kg

54. Non

55. – 56. Oui

57. – 58. n.a.

D Échéancier de réalisation

59. fin 1999 – juin 2000

60. septembre 2000 – juin 2002

61. juin 2002 – janvier 2004

62. mai 2004

63. 24 mois

64. mai – juillet 2006

65. 11 septembre 2006

E Coûts

- 66. 0
- 67. 19 000 000 €
- 68. 3 000 000 €
- 69. -
- 70. 22 000 000 €



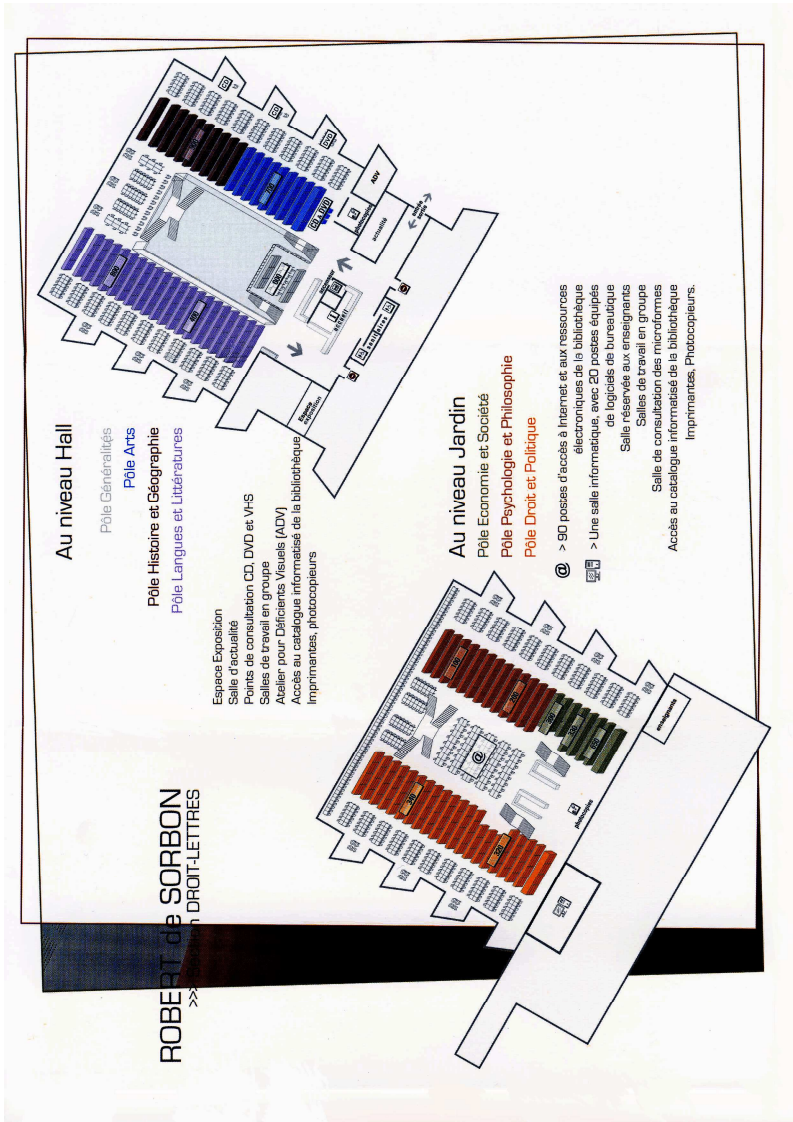
Façade arrière de la bibliothèque universitaire
(Photo: Marie-Françoise Bisbrouck)



Escalier public (Photo: M.-F. Bisbrouck)



Postes d'access à Internet et ressources électroniques (Photo: M.-F. Bisbrouck)



Bibliothèque universitaire

Southampton, Hartley Library - University of Southampton. United Kingdom

A General information

a) Name and address

1. University Library
2. Hartley Library
3. Hartley Library, University of Southampton, Southampton SO17 1BJ
United Kingdom
4. Phone : 44-(0) 23 8059 2677
Fax : 44-(0) 23 8059 5451
E-mail : mlb@soton.ac.uk
5. Dr Mark Brown
6. Mr. Richard Wake, Deputy Librarian

b) Population served

7. 23 785
8. 19 089 (FTE) inclusive part-time students
9. N/A
10. 4 295

c) Conditions of the library (before the new project)

11. 10 243 m²
12. 1 207 in main library, 12 in archives
13. 483 135 linear metres of books and periodicals
4 792 linear metres in archives
14. all except archives
15. 184 m² in archives
16. 87
17. 78 hours per week in University Term (33 weeks)

B The new building: aims and features

a) Architect(s)

18. Wilson Mason
19. Mr. Stephen Cox
20. New building / Extension / Renovation

b) Aims of the new building

21. Modernise the overall environment, including social learning space and more logical sequencing and rational service delivery
 - Provide higher quality and more flexible seating and group study space with increased IT provision
 - Reorganise stock within the Library to provide for stock expansion, increased e-provision, and the recovery of space in the medium term
 - Increase the holding capacity of the archives to allow for 20 years of accessions and improve the reader environment for special collections and archives
 - Zone naturally the reading areas to make areas more attractive for longer-stay users and researchers
 - Creation of high quality exhibition gallery for archive exhibitions and adjacent display and exhibition space
 - Improve access for users with disabilities
 - Provide dedicated areas for music, film and microforms
 - Increase the number of small group IT teaching rooms
 - Configure the entrance and reception areas to facilitate longer opening hours
 - Provide increased space for Library Digitisation Unit

c) Special Features

22. Central site at the heart of the University in the newly-landscaped Library Square
23. Creation of a single integrated environment from the existing buildings dating from 1914, 1935 and 1983 and the modern extension. Extensive refurbishment of almost the whole building within the existing fabric.
 - Externally the building elevations are a mixture of brickwork, steel-framing, curtain walling, general glazing and rendered walls.
 - Thermodeck natural ventilation system as a component of energy-saving strategy.
 - Light sensitive lighting around the perimeter for energy-saving.
 - Successful balance between conflicting requirements of introducing light into a comparatively deep building and keeping glazing to a minimum to facilitate ventilation system.

- Installation of disabled lift and ramps.

C Technical information about the new building

a) Floor area (in m²)

24. 14 732 m², of which 4 100 m² is a new build, and around 8 859 m² re-furbishment. The figures below refer to the whole building which consists of new build, refurbished areas and existing areas not refurbished in this project.
25. 8 448 m² (includes 13 group study rooms)
26. music and film study room 123 m²
27. student workstation rooms: 228 m²; IT training rooms: 202 m²; Assistive technology suite: 140 m² network and/or wireless connections to study places throughout
28. includes strongrooms, conservation, reading room, seminar room, specialist facilities and printed special collections : 1 175 m²
29. includes seminar room for the Centre for Excellence in Teaching and Learning: 118 m²
30. Special Collections Exhibitions: 54 m². Exhibitions are also mounted on the walls of the wide corridor leading to Special Collections.
31. none
32. Latte's Cafeteria : 122 m²
33. 1 458 m²
34. none outside Special Collections
35. 2 666 m²
36. The Library is arranged on five floors. The public are admitted to all parts of the building.
37. 1 493
38. 16
39. 296, but each study place has potential access for laptop use
40. see 41.
41. 1 181

b) Total potential capacity of shelving

42. 33 493 linear metres
43. 24 882 linear metres
44. none outside Special Collections

45. 8 611 linear metres
46. included in 43. above
47. Archives: 7 101 linear metres
48. 105

c) Mechanical features

49. N/A
50. Thermodeck heating and natural ventilation system in new part of the building
51. N/A
52. N/A
53. fire proof lift
54. none
55. 3M
56. N/A
57. – 58. N/A

D Schedule of the building process

59. – 64. The project consisted in a number of linked subprojects. Initial planning began in 2002, with contractors on site from June 2003. The linked projects for Levels 1, 3 and 4 continued through 2003-4, with Level 2 scheduled during 2004 completing just before the official opening of the Library in November 2004. As the Library was not closed at any time, there were interruptions in the work between the phases and to minimise disruption during examination periods. There was then a second main phase for Level 5 beginning in April 2006 and completing in September 2007.
65. Official opening of extension and refurbishment of Levels 1-4 on 24 November 2004. Level 5 extension completed in early October 2007.

E Costs

66. None. The University owns the site.
67. £ 10 225 936 (including VAT)
68. £ 812 772 (including VAT)
69. £ 1 883 088 (including VAT)
70. £ 12 921 796 (including VAT)

F Publications

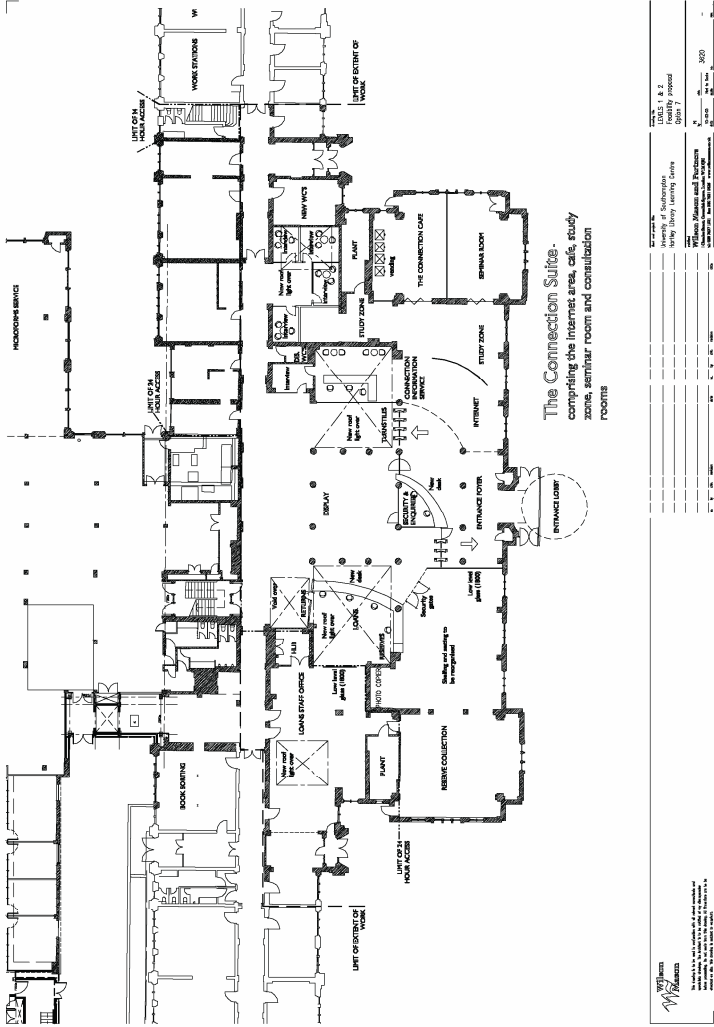
Wake R.L. : Update on new library buildings: Southampton University Library, Sconul Newsletter 30, Winter 2003, pp8-10

<http://www.sconul.ac.uk/publications/newsletter/30/4.PDF>

Brown M.L. and Wake R.L. : From accretion to integration - renewing the Hartley Library 2002-2007 (In Dewe M.: *Renewing our libraries: case studies in re-planning and refurbishment*). Ashgate Publishing Ltd., [due to appear 2008]



Level 2 Foyer (Foto: Steve Shrimpton)



Level 2 ■ Entrance (Architects: Wilson Mason)

Tallinn, Estonian Academy of Music and Theatre Library. Estonia

A General information

a) Name and address

1. University Library
2. Estonian Academy of Music and Theatre Library
3. Rävåla pst 16, 10143 Tallinn, Estonia
4. Phone : +372 6675 751
Fax : +372 6675 800
E-mail : rmtk@ema.edu.ee; <http://www.ema.edu.ee>
5. Ilvi Rauna
6. Kadri Steinbach

b) Population served

7. 2 658
8. 673
9. 0
10. Staff professors and teachers: 124
Researchers: 7; Administrators: 93

c) Conditions of the library (before the new project)

11. 490 m²
12. 26
13. 4 450 linear metres of books and periodicals
14. 42 linear metres
15. 4 408 linear metres
16. 13
17. 40 hours per week, 253 days per year

B The new building: aims and features

a) Architect(s)

18. AS Eesti Projekt
19. Kalju Luts, Kalvi Voolaid, Urmas Elmik
20. New building

b) Aims of the new building

21. more holdings in open stacks
 - more readers seats
 - development of the library in the field of research
 - computer and audiovisual materials
 - development of training for non-student readers
 - extension of the opening hours to the public

c) Special Features

22. Location of the library in the centre of city, in the main building of the academy, adjacent to public transportation.
23. The building has three wings, the front façade is designed as a piano keyboard; different kind of windows; disabled access.

C Technical information about the new building**a) Floor area (in m²)**

24. 935 m²
25. 749 m²
26. special room for audiovisuals 52 m², plus 17 audio working stations on the territory of the library
27. Computer class 52 m²
28. Library archives 40 m²
29. N/A
30. Library lobby 137 m²
31. N/A
32. no (near the library there are a public refreshments)
33. 146 m²
34. 40 m²
35. 749 m²
36. 2 floors
37. 61seats
38. altogether 23 audiovisual working stations
39. 22 computers

b) Total potential capacity of shelving

40. – 41. N/A

42. 4 332 linear metres (215 727 items)
43. 4 259 linear metres
44. 73 linear metres
45. N/A
46. 18 360 items of audiovisual materials
47. N/A
48. 10

c) Mechanical features

49. yes
50. central heating
51. general lighting, complemented with functional lighting
52. Acoustics in the building is specially designed for studying music
53. - 54. N/A
55. 3M
56. yes
57. – 58. N/A

D Schedule of the building process

59. in 1983 the location was decided, in 1986 preparations began
60. 1985
61. It is possible to present only the winner project – Eesti Projekt
62. 1991
63. 1991-1999
64. summer 1999
65. 12 September 1999

E Costs

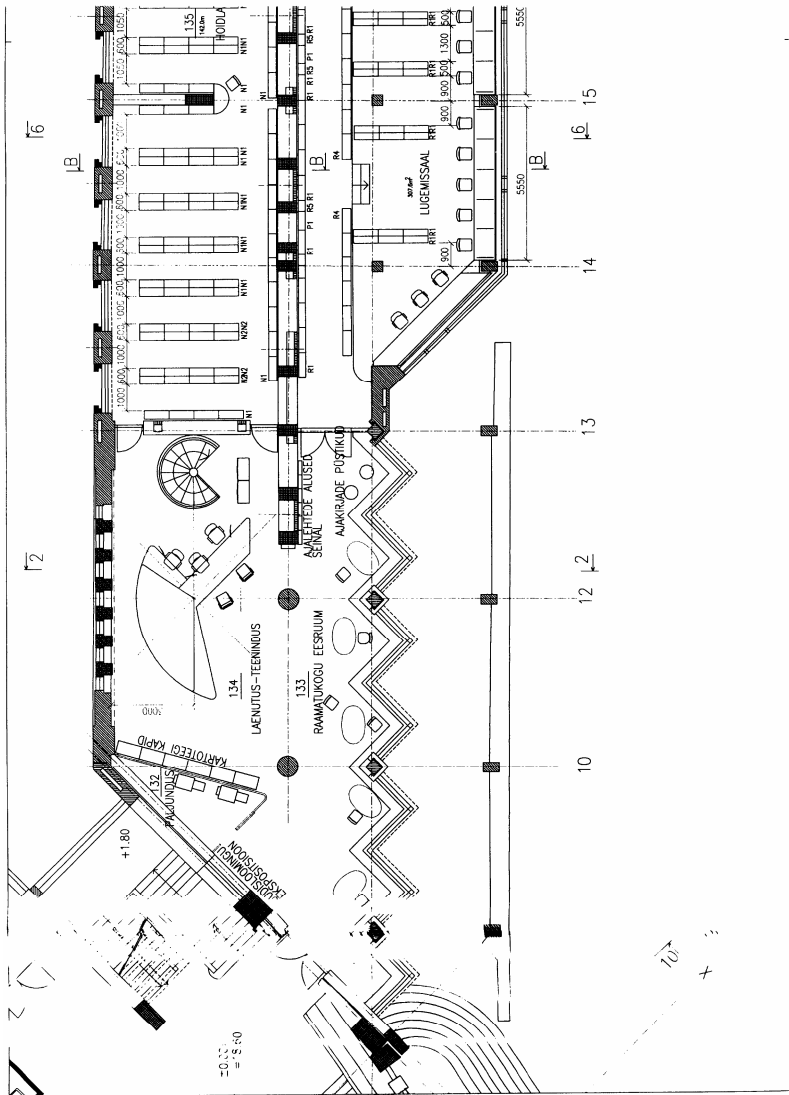
66. N/A
67. The whole building, incl. library: 7 800 000 €
68. all classrooms, staff rooms, electronic music studio and library:
607 160 €



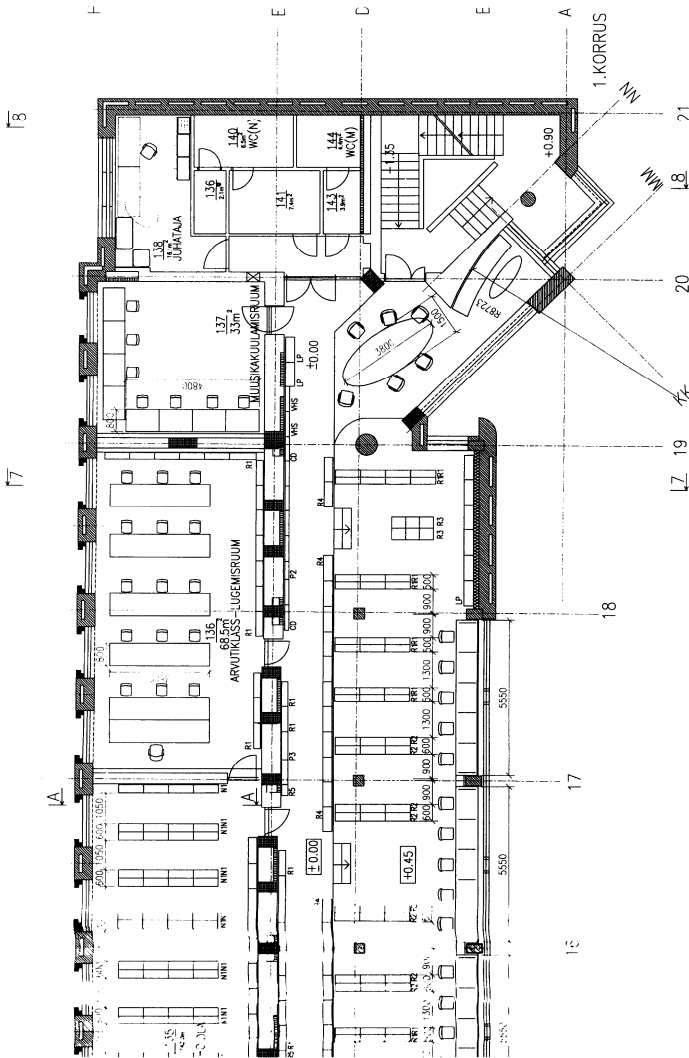
Entrance



Information desk



Library lobby



Library continues

Tilburg, Library and IT Services - Tilburg University. The Netherlands

A General information

a) Name and address

1. University Library
2. The Montesquieu Learning Centre, Library and IT Services
Tilburg University
3. Warandelaan 2
PO Box 90153
5000 LE Tilburg
The Netherlands
4. Phone : +31 13 4662146
Fax : + 31 13 4663370
E-mail : Library@uvt.nl
5. Hans Geleijnse
6. Hans Geleijnse

b) Population served

7. 1 600 staff – 12 500 students – 2 000 external users
8. 12 500
9. 750
10. 1 600

c) Conditions of the library (before the new project)

11. 10 000 m²
12. 960
13. appr. 650 000 in library building
14. 200 000
15. appr. 900 000
16. 120 FTE incl IT Services and Media Services
17. Mo – Fri 8:00 – 21:30; Saturday and Sunday 10:00 – 17:00.
In total: 77,5 hours

B The new building: aims and features

a) Architect(s)

18. Becker (interior designer)
19. Arend van der Meer, Facility Manager
20. New building: It was the establishment of a Learning Centre in one of the new buildings of the University, the Montesquieu Building of the Faculty of Law. The Montesquieu Learning Centre or MLC is a learning environment with ICT facilities where students of Tilburg University – with or without the supervision of a lecturer – can co-operate groupwise in education assignments.

b) Aims of the new building

21. The main objective of the project is to provide a state of the art environment for groupwork and for more interactive learning experiences. Although the building is mainly used by the Faculty of Law the Learning Centre – called Montesquieu Learning Centre – is accessible for all students and is also used by teaching staff of other faculties. This facility is managed by Library and IT Services.
It provides more 250 extra reader seats with 150 PC's.
The Montesquieu Learning Centre is open Monday to Friday from 8.00 o'clock in the morning till 23.00 o'clock in the evening.
The Learning Centre is closed on dates on which the University is closed.

c) Special Features

22. The Montesquieu Learning Centre is located on the ground floor of the Montesquieu building and consists of three “classrooms”, a room with computers with video editing software and webcams and a room specially suitable for video recording of educational situations. The larger part of the Learning Centre is an open space where students can gather and work in groups. A total of over 250 seats and 150 PC's is available.
All university buildings, including the library, are situated on a relatively compact campus.
23. N/A

C Technical information about the new building

a) Floor area (in m²)

24. – 36. N/A

37. >250

38. N/A

39. 150

40. – 41. N/A

b) Total potential capacity of shelving

42.-48. N/A

c) Mechanical features

49.-58. N/A

D Schedule of the building process

59.-64. N/A

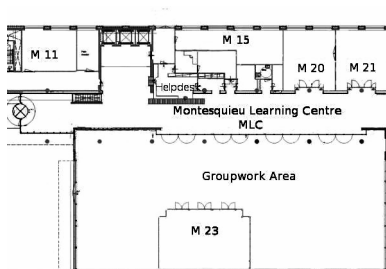
65. 1.02.2006

E Costs

66.-70. N/A



Impressions



Ground floor

Vilnius, Scholarly Communication Centre. Lithuania

A General information

a) Name and address

1. University Library
2. Scholarly Communication Centre
3. Universiteto st. 3, Vilnius, LT-01122 Lithuania
4. Tel : +370 5 2687100
Fax : +370 5 2687104
E-mail : mb@mb.vu.lt
5. Director General Prof. Audronė Glosienė
6. Ms Irena Krivienė, Director for Information Services, Maintenance and Finance

b) Population served

7. 25 616
8. 17 037
9. 7 896
10. 2 866

c) Conditions of the library (before the new project)

11. 12 514 m²
12. 1 075
13. 48 995 linear metres
14. 3 154 linear metres
15. 45 841 linear metres
16. 174
17. 63 hours per week, 286 days per year

B The new building: aims and features

a) Architect(s)

18. R. Palekas ARCH studio
19. Rolandas Palekas
20. New building

b) Aims of the new building

21. Saulėtekis Valley CSC answering the needs for studies, research, and knowledge of the academic community will be a *multifunctional* information institution, whose activities will be based on conception of four interrelated dimensions: knowledge, learning and research, information, social-communication and culture:
 - more holdings in open stacks, + 310000 items
 - more readers seats, + 612
 - 330 computers for readers and 18 for audiovisual materials
 - development of training for non-student readers
 - extension of the opening hours to the public: 7/24

c) Special Features

22. The new VUL will be build in the business cluster Saulėtekio slėnis (Saulėtekio valley) in the territory of Saulėtekis avenue. Four faculties of Vilnius University are located there at the present, and also some departments of Vilnius Gediminas Technical University and halls of residents (dormitories) of both universities. It is planned to move some other faculties of Vilnius University, scientific institutes of Lithuania, in Saulėtekio slėnis (Saulėtekio valley) and here will be settling business enterprises in the future. The new building of VUL will be the first structure in Saulėtekis valley, eventually it will be surrounded by the other buildings of cluster. So library will be in the very centre of it (cluster), adjacent to public transportation.
23. While projecting technological installations an aspiration arose to choose the best and most advanced technologies used in the foreign libraries that would grant a qualitative provision of information for the customers and would be in keeping with safeguard of customers, constructions and information resources and also would supply conditions for comfortable work.
 - octogonal plan
 - precast concrete pannels
 - narrow and high windows, North facade glazed strongly
 - disabled full access
 - all selected materials economical

C Technical information about the new building

a) Floor area (in m²)

24. 17 393 m²
25. 4 444,32 m²
26. 355,93 m²
27. included into reading rooms, in all zones access to a wireless internet
28. none
29. 89,48 m²
30. 280 m² entrance area
31. 199,10 m²
32. 106,57 m²
33. 809,84 m²
34. 5 398 m²
35. 4 863,41 m²
36. The new building will consist of three blocks united by the basement. The constructions will be of 3, 4 and 5 floors overhead not counting basement which will unite all blocks of the library. According to the project 3 floors analogical to the basement's area will be underground: one technical floor and two book storage floors.
Each block has its own functions:
The Grand Block – 5 floor construction (customers' zone, public space, workspaces of the library): Basement will have halls assigned for the conferences and exhibitions and here will be situated the department of Information Resources Management, 1-4 floors assigned for the customers' zone.
The Middle Block – 4 floors construction (customers' zone): Basement floor will have the reading room of up-to-date scientific periodicals, 1-3 floors will have specialized reading rooms.
The Minor Block – 3 floors construction assigned for the administration: Basement floor will have café and book shop, 1-2 floors will be assigned for the Board of Library Managers, Offices of Public Relations and Information Technologies, Maintenance Division, Reception Room.
37. 612
38. 18
39. 420
40. 65

41. 84

b) Total potential capacity of shelving

42. 3 910 000 volumes

43. 310 000 volumes

44. 3 600 000 volumes

45. 2 500 000 volumes

46. 2000 items

48. 90

c) Mechanical features

49. yes

50. yes

51. yes

53. 5

54. Horizontal and vertical transporters, interlinking book storage premises with reading rooms, info desk (it will also have a function of Lending department) and premises of Information resources management department in the basement floor. According to the project there will be 24 stations and 80 trolleys.

55. Safeguard gates, Systems of security

56. yes

57. inside building: Cat 6 UTP cable, multi-mode optical fiber, WiFi; outside single-mode optical fiber

58. Automatic book return machine with screening module. It will be installed in the territory of the library “previous to the control line” and so it will give an opportunity to return the book before entering the readers’ zone. RFID system for the protection and identification of the publications will be implemented and it will be integrated into the presently used library information system ALEPH. Self-service machines of book delivery. Two machines will stand close to info desk and here will be brought publications for the lending.

D Schedule of the building process

59. 2004

60. 2004

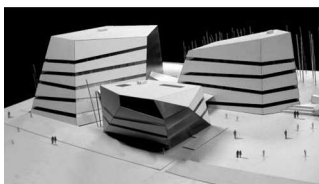
61. Project drawings 31 December 2006; competition contractors 2008

62. in the second part of 2008

63. 2008-2010
64. 2011
65. 2011

E Costs

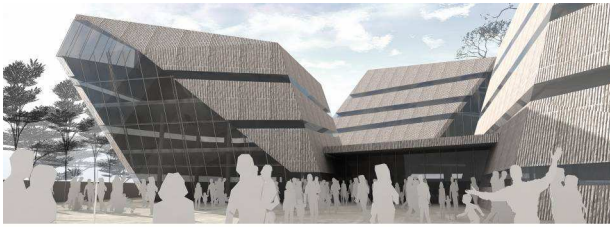
66. free
67. 21 028 067 €
68. 3 412 171 €
69. 368 408 €
70. 32 168 446 € (including 7 359 799 € for other costs: communications (electricity net, roads, plumbing etc.)



A017 maketo nuotraukos

PALEKO ARCHITECTS

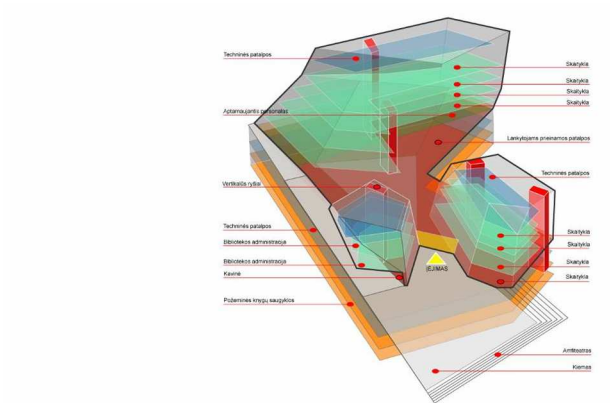
The model (Architects)



A017 pagrindinis įėjimas

PALEKO ARCH STUDUJA

The Entrance (Architects)



A017 funkcinė schema

PALEKO ARCH STUDUJA

Functional schema (Architects)

Weimar, Universitätsbibliothek der Bauhaus- Universität Weimar. Deutschland

A Allgemeine Information

a) Name and Adresse

1. Universitätsbibliothek
2. Universitätsbibliothek der Bauhaus-Universität Weimar
3. Steubenstraße 6, D-99423 Weimar, Deutschland
4. Tel : +49 3643 582801
Fax : +49 3643 582802
E-mail : info@ub.uni-weimar.de
Web: <http://www.uni-weimar.de/cms/universitaet/zentrale-einrichtungen/universitaetsbibliothek.html>
5. Dr. Frank Simon-Ritz, fsimon@ub.uni-weimar.de
6. Fr. Sylvelin Rudolf, Baureferentin, sylvelin.rudolf@ub.uni-weimar.de

b) Publikum

7. 7 500
8. 4 000
10. 700

c) Situation der Bibliothek (vor dem neuen Projekt)

11. 2 767,10 m²
12. 218
13. 415 000 Bände
14. 165 000 Bände
15. 250 000 Bände
16. 39
17. 71 Stunden/Woche und 289 Tage/Jahr

B Das neue Gebäude: Ziele und Eigenschaften

a) Architekt(en)

18. meck architekten, München
19. Andreas Meck
20. Neubau

b) Ziele des neuen Gebäudes

21. Die Bibliothek der Bauhaus-Universität Weimar erhält erstmals in ihrer Geschichte ein eigenes Bibliotheksgebäude. Darin werden sowohl ehemals dezentrale Zweigbibliotheken als auch die Hauptbibliothek zu einer organisatorischen und räumlichen Einheit zusammengeführt. Die Bibliothek rückt durch ihre günstige zentrale Lage und Campusnähe unmittelbar zur Universität als auch zur Stadt. Es sollen u.a. 240 unterschiedlich ausgestattete, vernetzte Benutzerarbeitsplätze in attraktiven Fachlesesälen mit entsprechenden Freihandbereichen entstehen. Außerdem entsteht das Audimax der Universität mit über 416 Sitzplätzen.

c) Spezielle Merkmale

22. Der Bibliotheksneubau befindet sich in der Innenstadt Weimars auf dem Grundstück einer ehemaligen Brauerei zwischen der Steubenstraße, Schützengasse und dem Frauenplan. Die ehemalige Industriebrache hat sich in einen neu gestalteten Universitätsbereich verwandelt. Der Neubau der Universitätsbibliothek mit Audimax komplettiert das Ensemble in Nachbarschaft zur 1995 bezogenen Teilbibliothek „Limona“, dem Fotostudio der Fakultät Gestaltung, dem 2002 fertig gestellten Mediengebäude „Konrad Zuse“, das das Rechenzentrum, Poolräume und Studios der Fakultät Medien beinhaltet. Der Bibliotheksneubau steht mittels seiner Bauform und den Glas- und Betonflächen im spannungsreichen Kontrast zu den umgenutzten Gründerzeitbauten mit ihren roten Klinkerwänden. Alle übrigen Universitätsstandorte sind in unmittelbarer Nähe. Außerdem befindet sich die Bushaltestelle des öffentlichen Nahverkehrs direkt vor Ort.
23. Das zweiflügelige Gebäude fügt sich passgenau in die vorhandene Bebauungsstruktur und die komplizierten topographischen Gegebenheiten ein. Dabei entstanden drei verschiedenartige Platz- und Hofsituationen, die über Treppen und Wege mit dem Stadtraum verknüpft sind und vielfältige Möglichkeiten bieten, das Quartier zu durchqueren. Am „Hochschulforum“ zeigt die Bibliothek ihre Offenheit mittels einer großflächig verglasten Fassade und vermittelt das abstrakte Bild eines Bücherregals. Der Y-förmige Grundriss (Trennung des öffentlichen und internen Bibliotheksbereichs) öffnet sich nach Norden und bildet eine intime tiefer liegende Hofsituation. Die Büros der Bibliotheksverwaltung sind zur Rückseite des Frauenplans nach Südosten ausgerichtet. Das Gefälle von ca. 4 Metern wird für die großzügigen Eingangssituationen und Foyers der Bibliothek als auch für die Tageslichtbeleuchtung des Audimax genutzt.

Die Betonfassade ist mit einer dunkelgrauen Farbschicht überzogen. In den Foyers dominieren roher Estrich und weiß- bzw. graugestrichener Beton. Im Inneren ist die Bibliothek als auch der Hörsaal mit hellem, naturbelassenem Eichenholz ausgekleidet.

C Technische Information über das neue Gebäude

a) Gesamtfläche (in m²)

24. 4 919,64 m², davon 511,35 m² für das Audimax
25. 2 716,33 m²
26. PC-Pool 50 m² mit Multimedia-PCs
27. Carrels und Gruppenarbeitsräume inkl. PC und Videoausstattung
73 PC-Arbeitsplätze
28. Sondermagazin für historische Buchbestände
29. 50 m²
30. Ausstellungsmöglichkeiten auf den Verkehrsflächen
31. Audimax 511,35 m²
32. Getränkeautomaten
33. 595,92 m²
34. 1 096,06 m²
35. 125,00 m²
36. 5 Bibliotheksebenen, davon 4 öffentlich zugänglich
37. 240
38. 15 im PC-Pool und 6 in Carrels
39. 73
40. PC-Pool mit 15 Plätzen für Ausbildungszwecke
41. 167

b) Gesamtkapazität Stellfläche

42. 483 000 Bände
43. 198 000 Bände
44. 285 000 Bände
45. 148 000 Bände
46. ca. 100 lfd. m
48. 35

c) Mechanische Eigenschaften

49. Teilklimaanlageanlage (keine Befeuchtung, keine Zonenregelung) in den öffentlichen Bereichen, Magazine sind vollklimatisiert, im Verwaltungsbereich natürliche Lüftung über Fenster
50. Im gesamten Buchaufstellbereich (Fachlesesäle und Magazin) Gebäudetemperierung mit Frischluftversorgung und Wärmerückgewinnung. Carrels und Gruppenarbeitsräume mit Wandheizung. Im Verwaltungsbereich Fußbodenheizung.
51. Beleuchtung überwiegend mit Energiesparlampen, Einzelschaltungen, Zentralschaltungen. Steuerung über EIB. Individuelle Arbeitsplatzbeleuchtung Leseplätze, Carrels, Gruppenräume.
52. schallabsorbierende Holzverkleidungen der Decken und teilweise der Wände, Akkustikdecken im Verwaltungsbereich
53. 2 kombinierte Personen-und Lastenaufzüge, Treppenschrägaufzug am Behindertenzugang des Audimax
54. Transporte per Bücherwagen und Aufzüge
55. Buchsicherungsanlage
56. Rechnergestützte Gebäudeleittechnik. Aufschaltung Brandmeldeanlage, Videoüberwachung, elektronische Türschließenanlage, Zutrittskontrolle, zentrale Beleuchtungsanlage
57. strukturierte ICAT-7-Verkabelung, Gigabit-Ethernet, Anbindung an das Universitätsnetz über Monomode LWL, WLAN im gesamten Gebäude, Anbindung an Telekommunikationsanlage der Universität Voice IP
58. Mechanische Entrauchung nach Brandschutzkonzept, Hochdrucknebelwasserlöschanlage HNLA mit vier vorgesteuerten Bereichen (z.B. Foyer, Wasservorhang Magazin). Elektronische Lautsprecheranlage ELA, Fluchttürsteuerung

D Zeitplan

59. Planung, Bauprogramm: 1994, Bauantrag 1998
60. Städtebaulicher Wettbewerb 1991
61. Machbarkeitsstudie 1997, Planungsbeginn 1998
62. Februar 2002
63. bis Juli 2005
64. August 2005
65. Probebetrieb September 2005, Eröffnung am 25. Oktober 2005

E Kosten

- 66. war bereits Landeseigentum
- 68. 1 200 000 € (einschließlich Audimax)
- 70. Total: 18 000 000 € (einschließlich Audimax)

F Veröffentlichungen

Wendler, Eberhard: Der Bibliotheksneubau der Bauhausuniversität Weimar. in: GFF / glasforum: Zeitschrift für Glas Fenster Fassade Metall Jg. 11 (2007), Nr. 4, S. 67-69, ISSN: 1432-6264.

Bibliotheks- und Hörsaalgebäude in Weimar. Library and Lecture Hall in Weimar, in: Architektur + Wettbewerbe: AW, 209 (2007), Nr. 3, S. 20-23, ISSN: 0341-2784.

Völker, Kurt: Für Bücher und Menschen, in: Bautenschutz + Bausanierung: B + B; Bauen im Bestand: Jg. 30 (2007), Nr. 1, S. 33-34, ISSN: 0170-9267.

Bachmann, Wolfgang: Bibliotheks- und Hörsaalgebäude Weimar, in: Baumeister, Jg. (2005), Nr. 11, S. 50-59, ISSN: 005-674X.

Bibliotheks- und Hörsaalgebäude in Weimar. Library and lecture hall in Weimar, in: Detail, Jg. 45 (2005), Nr. 11, S. 1254-1258, ISSN: 0011-9571.

Weckerlin, Gernot: Bauhaus-Universität Weimar. Neubau des Bibliotheks- und Hörsaalgebäudes, in: Bauwelt, Jg. 96 (2005), Nr. 38, S. 26-31, ISSN: 0005-6855.

Ziegenhardt, Oliver: Bücherschrank mit Rotznase, in: Das Deutsche Architektenblatt, Ausgabe Ost, Jg. 37 (2005), Nr. 11, S. 049-050, ISSN: 0946-9370.

Bibliotheks- und Hörsaalgebäude Weimar. (Baukulturführer 20). Hrsg. Nicoletta Baumeister. Amberg: Büro Wilhelm 2005. 31 S.

Simon-Ritz, Frank: Im Herzen der Universität - der Bibliotheksneubau der Bauhaus-Universität Weimar, in: Bibliothek Forschung und Praxis, Jg. 27 (2003), Nr. 1/2, S. 122-124, ISSN: 0341-4183.

Rudolf, Sylvelin: Der Neubau der Universitätsbibliothek Weimar, in: dbv Mitteilungen Landesverband Thüringen im deutschen Bibliotheksverband Jg. 10 (2003), Nr.2, S. 3-5.

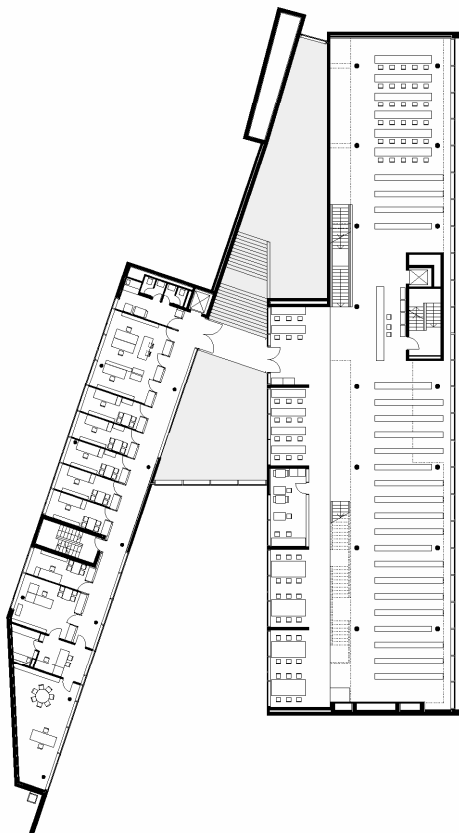


Westfassade (Foto: Alexander Burzik, Bauhaus-Universität)



Fachlesezone Ebene +1 (Foto: A. Burzik, Bauhaus-Universität)

meck architekten

Bibliotheks- und Hörsaalgebäude
Ebene +1

Ebene +1 ■ Fachlesezone (meck architekten, München)

Wildau, Hochschulbibliothek TFH Wildau. Deutschland

A Allgemeine Information

a) Name und Adresse

1. Hochschulbibliothek
2. Hochschulbibliothek, TFH Wildau
3. Bahnhofstrasse / Halle 10, TFH Wildau, D-15745 Wildau
4. Tel : +49 3375 508123
Fax : +49 3375 508282
E-mail : tfhbib@bib.tfh-wildau.de
5. Dr. Frank Seeliger
6. Frau Sabine Donau

b) Publikum

7. 6 000 (Angehörige der TFH u. Fremdnutzer)
8. 3 000
9. 500
10. 198

c) Situation der Bibliothek (vor dem neuen Projekt)

- 2 kleinere Standorte, geringe Raum- und Regalkapazitäten
11. 1 400 m²
 12. 150
 13. 3 500 laufende (lfd.) Regalmeter (inkl. Archiv)
 14. 3 000 lfd. Regalmeter
 15. 500
 16. 5,7
 17. 46h, Montag – Sonnabend, ausser an Feiertagen

B Das neue Gebäude: Ziele und Eigenschaften

a) Architekt(en)

18. Chestnutt_Niess
Köpenicker Straße 48-49, D-10179 Berlin (Mitte)
19. Frau Chestnutt, Herr Niess

20. Neubau/Erweiterung/Renovation

b) Ziele des neuen Gebäudes

21. neue zentrale Bibliothek mit größerem Raumangebot und Symbiose mit Mensa/Cafeteria (beide Nutzer teilen sich das Gebäude)
 - attraktivere und bessere Studier- und Forschungsmöglichkeiten für Angehörige der TFH in einer zentralen Einrichtung
 - grössere Bestände in Freihand-Aufstellung, von 1 800 laufenden Regalmeterern auf 3 000 erhöht
 - mehr Benutzerarbeitsplätze, von 40 auf 150 Arbeitsplätze vermehrt
 - EDV und AV-Material, mehr Arbeitsplätze mit LAN u. WLAN Anschluß inkl. eigener Mediathek mit 9 Arbeitsplätzen
 - Schulung von nichtuniversitärem Publikum, gewollt für räumliche Einbindung der TFH Wildau und Betreuung für alle Lebenszyklen für Rekrutierung von Studenten über Kinder-Universität bis hin zum alumni-Grundsatz (Senioren-Seminare)
 - Erweiterung der Öffnungszeiten der Bibliothek, da Bibliothek ein Lern- und Studierort werden soll (digitale Bibliothek ist bereits 24/7)

c) Spezielle Merkmale

22. Die Bibliothek liegt auf dem Campus, in der Mitte der Gemeinde Wildau, gleich neben der S-Bahn Nr. 46 von Berlin nach Königswusterhausen.
23. Bauen im denkmalgeschützten Bestand
Quader, also rechteckig
viel Glas (z.B. Laterne bzw. Oberlicht, komplette Ostfassade), teils hohe Fenster
behindertengerecht

C Technische Information über das neue Gebäude

a) Gesamtfläche (in m²)

24. 1 400 m²
25. ca. 1 200 m²
26. in Mediathek mit 9 Arbeitsplätzen abspielbar

27. 30 Terminals (Thin-Clients), 4 PC's in carrels, 4 RFID-Selbstverbucher
28. an TFH entstandene Abschlußarbeiten
29. mit Mediathek 3 Räume
30. nicht explizit vorhanden
31. im EG für ca. 40 Personen
32. Cafeteria u. Mensa im gleichen Haus im Erdgeschoss
33. vier Büros und eine Teeküche
34. im Keller des Nachbarhauses (Haus 13)
35. k.A.
36. vom 1. Obergeschoß bis 3. OG um offenen Innenraum
37. 150
38. 9
39. 34
40. 3
41. k.A.

b) Gesamtkapazität Stellfläche

42. ca. 91 000 Bücher und 140 Zeitschriften
43. 3 000 lfd. Regalmeter
44. 500 lfd. Regalmeter im Nachbargebäude als Archiv
45. keine
46. ca. 1 000 Medien
47. k.A.
48. 5,7

c) Mechanische Eigenschaften

49. Belüftungsanlage
50. Fußbodenheizung und Heizkörper
51. eine mit Sensortechnik ausgestattete Lichtsteuerung für einzelne Bereiche (die mittels Oberlicht ausreichend versorgt werden können) wird in I/2008 realisiert
52. integrierte Lautsprecheranlage
53. 1 Aufzug
54. nein
55. Buchsicherung auf RFID-Basis
56. Sensoren für Brandschutz, Bewegungsmelder für Alarmschaltung

- 57. WLAN in gesamter Bibliothek
- 58. k.A.

D Zeitplan

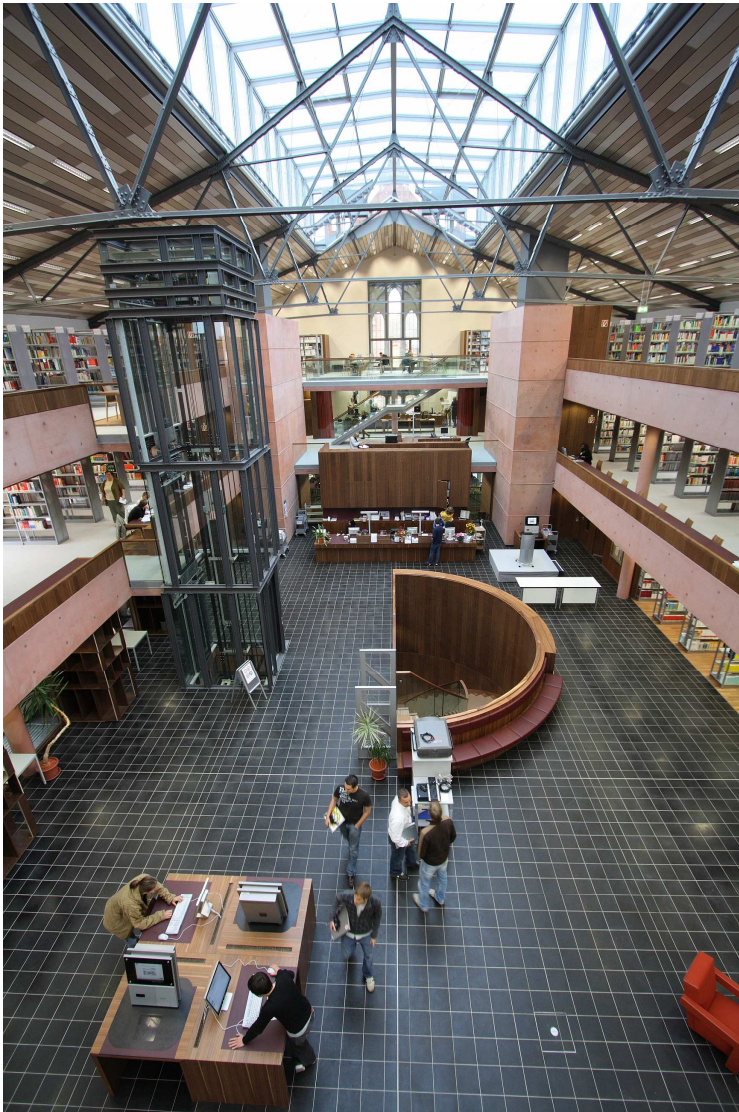
- 59. seit 1997
- 60. ja
- 61. ja
- 62. 2002
- 63. 5 Jahre
- 64. Sommer 2007
- 65. 11.9.2007

E Kosten

- 66. gehört der Hochschule/Bundesland
- 67. 10 000 000 €
- 68. – 69. k.A.
- 70. 12 000 000 €



Die alte Industriehalle für die Bibliothek und Mensa
(Foto: Marcus von Amsberg)



Blick auf das Piano Nobile und die beiden es umkränzenden Geschosse
(Foto: Frank Stein)

Seminar programme

Building on experience: Learning from the Past to Plan for the Future

Tuesday, 8th April 2008

Venue: National Széchényi Library, Budapest

- | | |
|---------------|---|
| 12:00 – 13:00 | Registration |
| 13:30 – 14:00 | Opening
Director of The National Széchényi Library
Ministry of Culture, Library Division
Chair of LIBER Architecture Group, Ulrich
Niederer |
| 14:00 – 15:30 | Session 1: Lessons learned
Graham Bulpitt: <i>Introduction</i>
Marie-Francoise Bisbrouck: <i>Evaluation of university
library buildings in France</i> |
| 15:30 – 16:00 | Coffee break
Poster session |
| 16:00 – 17:30 | Session 2: Case studies in library buildings –
then and now
Elmar Mittler: <i>The German Experience</i>
Valerie Vesque-Jeancard, Bibliotheque Nationale de
France: <i>A dynamic assessment of the François Mitterand
Library (Bibliothèque Nationale de France)</i>
Ewa Kobierska-Maciuszko: <i>Warsaw University Library:
Experience 10 years after</i> |
| 17:30 | Guided tour to The National Széchényi Library |
| Evening | Free evening |

Wednesday, 9th April 2008

Venue: National Széchényi Library, Budapest

- | | |
|--------------|---|
| 9:00 – 11:00 | Session 3: Sustainable Architecture
Gerd Schablitzki, Umweltbundesamt, Dessau: <i>Sus-
tainable Architecture: Truly ecological, or just a label? -
Ambition and reality in building the new Federal Environ-
ment Agency's office and library complex in Dessau</i> |
|--------------|---|

Wednesday

- 9:00 – 11:00 Pat Noon: *The Lancaster Library at Coventry University*
- 11:00 – 11:30 Coffee break
Poster session
- 11:30 – 13:00 **Session 4: Contributed papers**
Carine El Bekri-Dinoird: *Reims: From a library to another: The new Reims Academic Library Robert de Sorbon*
Søren Clausen: *Copenhagen Faculty Library for Humanities*
Hans van Velzen, director, and Jo Coenen, chief government architect: *Amsterdam Public Library*
- 13:00 – 14:00 Lunch
Poster session
- 14:00 - 15.30 **Session 5: Refurbishing**
Speakers and titles to come
- 15:30 – 16:30 Transfer to Budapest Public Library by public transport
- 16:30 – 18:00 Coffee served at Budapest Public Library, followed by guided tours
- Evening Optional program: Sightseeing tour by boat, including buffet dinner

Thursday 10th April 2008**Study tour to Nyíregyháza and Debrecen**

- 8:00 Travelling from Budapest to Nyíregyháza and Debrecen by bus
- 11:00 Arrival at Nyíregyháza. Pick up by coach
- 11:30 – 15:30 Visits at Public Country Library and College Library, coffee break and lunch break
- 15:30 Departure to Debrecen by coach
- 16:00 – 17:30 Visit to New Country Library in Debrecen
- 18:00 Arrival by coach at hotels
- 19:00 Conference dinner

Friday, 11th April 2008**Venue: Debrecen University Library**

- 9:00 – 10:30 **Session 6: Lightning**
Raymond Belle: *How to highlight your library – the power of light!*
Marina Vio, professor IUAV University, Venice
- 10:30 – 11:00 Coffee break

Friday	Session 7: The right questions to the Architects
11:00 – 12:30	André Lohisse & Françoise Sogno, University Library Paris Dauphine: <i>Architects and librarians under pressure: dialoguing about the renovation of a library in a constrained environment</i> Teresa Pages I Gilibets, Biblioteca Jordi Rubio i Balaguer, Sant Boi de Llobregat, & Ignasi Bonet, Architect, Seccio de Planificacio i Programacio, Servei de Biblioteques, Diputacio de Barcelona: <i>Sant Boi de Llobregat Central Library, a good practice: librarian and architect working together, from the past to the future</i>
12:30 – 14:00	Lunch and guided tours to Debrecen University Library
14:00 – 15:30	Session 8: Hungarian Libraris Szegec <i>Regional Library of Pecs</i> <i>New Library of University of Economics, Budapest</i>
15:30 – 16:00	Coffee break
16:00 – 17:30	Session 9: New Models Les Watson, Saltire Centre Glasgow Caledonia University: <i>Building Libraries for Learning, the Saltire Centre at Glasgow Caledonian University</i> 2nd speaker and title to come Dr. rer. nat. Herbert Kristen, Deputy Librarian. University Library Karlsruhe: <i>24/7 – virtual services and a new extension of the University Library Building in Karlsruhe</i>
17:30 – 18:00	Conclusions Ulrich Niederer, chair, LIBER Architecture Group
Evening	Free evening

Saturday 12th April 2008

Return to Budapest by train

08:00 Departure. Arrival at noon.

Poster session in The National Széchenyi Library: By open invitation